

Bestyet A.I. Sires 2014 Semen Catalog

Genetics for True Grazing Adaptability

- * Since 1936, our family has bred grass-based dairy cattle on this prairie farm.
- * Our line bred herd is selected for sturdy, productive cows with staying power.
- * We offer both Milking Shorthorn and Dutch Belted breeding stock and semen.



Daughter of Meriville Milk More-P (See page 12)
Full sister to Meriville Blizzard-PP (See page 13)



Maternal sister to Bestyet Helpful (See page 4)
Dam is paternal sister to Hercules (See page 4)

Bestyet A.I. Sires
Winifred Hoffman and Family
4279 E. 12th Rd
Earlville, IL 60518-6079
Phone: (815)246-9523
e-mail: bestyetaisires@juno.com
On the web: www.bestyetaisires.com

Spring 2014 Bestyet A.I. Sire Price List

5 straw minimum order. Prices subject to change with availability. Volume discounts explained below.*

Dutch Belted – Registered with the Dutch Belted Cattle Association of America

Name (RC = Red Carrier)	Page	aAa	Stud Code	Price per straw
BRINK (A2/A2)	5	324156	54DL04	\$10
FINDLAY	11	612	4800	\$10
FORTIFIED-P (A1/A2)	3	162	138DL5111	\$10
GENTLEMAN-RC	6	4236	138DL3910	\$20
GOLD DUST	8	NA	138DL1101	\$18
HELPFUL	4	126	138DL4597	\$18
HERCULES	4	312	138DL4437	\$15
LOUIE (A1/A2)	6	261	54DL09	\$8
MOHICAN Red	10	5614	138DL3677	\$20
PERFECT DAY-ET (A1/A2)	10	231	138DL1084	\$10
RED LEGACY (A1/A2)	3	261	138DL5184	\$12
ROCKET	9	543	54DL03	\$20
SAMMY-RC	5	135	54DL08	\$15
SNAPPY	11	5461	138DL4184	\$30
STARDUST	10	324	138DL2644	\$10
TWOFOLD-RC	7	NA	54DL02	\$16
UNIVERSAL (A1/A2)	9	315426	138DL3932	\$15
ZINGER-RC	7	312	138DL819	\$30
ZORRO	8	561	138DL2643	\$20

Milking Shorthorn – Registered with the American Milking Shorthorn Society

P = Heterozygous Polled PP = Homozygous Polled (100% Dehorner)

BASS PLAYER	12	162354	138MS3461	\$7
BLIZZARD-PP	13	5341	138MS4854	\$15
FLASHBACK	16	651	138MS3420	\$15
JOE (A1/A2)	17	345126	138MS3460	\$7
KING OSCAR-P (A1/A2)	17	216435	138MS3635	\$10
LANCER—P (A2/A2)	17	513	54MS67	\$28
LORD BATES 3d	14	426	99MS6501	\$10
MATCHLESS DUKE	14	NA	54M44	\$10
MATCHMAKER-P	18	6125	138MS4436	\$15
MILK MORE-P	12	543612	54M43	\$18
NEW MILLENIUM	16	NA	120MS571	\$10
OUTER STAR-PP	13	516	138MS4928	\$13
OUTSTANDING-P	13	354216	138MS3636	\$10
PICASSO (A1/A2)	15	456	138MS2649	\$7
ROCK COUNTY	16	561	54M53	\$7

Polled Jersey--Registered with the American Jersey Cattle Association—page 18

FRANTASTIC (A2/A2)	18	216453	179JE107	\$12
---------------------------	----	--------	----------	------

***Volume Discounts:** These deductions apply to all bulls except Jerseys:

Deduct \$2 per straw for orders totaling 40-59 straws

Deduct \$3 per straw for orders totaling 60-99 straws

Deduct \$4 per straw for orders totaling 100-199 straws

Deduct \$5 per straw for orders totaling 200 or more

Orders over 70 straws: SHIPPING AND TANK RENTAL FREE!

Orders of 40-70 straws, pay only \$40 shipping/tank fees for regular ground.

(Actual shipping/tank charges for orders under 40 straws vary from \$85 to \$105 depending on region.)

Bestyet FORTIFIED-P—Polled Bull

Stud Code 138 DL 5111

DBCAA Reg # 2842

Born 2/28/11

aAa 162 (Dairy – Style – Tall)

A1/A2 Beta-Casein



Sire: Galoffs Jumbo Eddie-ET (polled) #2767

PGS: Threeway Acres Jumbo #2512

PGD: Threeway Acres Stripe #9433

Dam: Bestyet Rock Fern Fancy #9765

MGS: Bestyet Roxie's Rocket #2670

MGD: Bestyet Star Fern Fancy B0758.9375

Comments: The aAa analyzer noted this bull's balance and completeness, clean lines, durable bone in the leg.

His first few calves have good markings and excellent conformation.

His paternal sisters are powerful cows with good udders, and like him, growthy and early-maturing.

Sir Upson's RED LEGACY—Red Dutch Belted Bull

Stud Code 138 DL 5184

DBCAA Reg #2853

Born 12/17/2011

aAa 261 (Tall – Style – Dairy)

A1/A2 Beta-Casein

Sire: Sir Upson Shrek 2 #2836

PGS: Sir Upson Laddie #2740

PGGS: Bestyet Dreamweaver #2558

PGGD: Lady Upson Jackson of Beltazar

PGD: Lady Upson AC Schuyler

PGGS: Bestyet Apple Cider #2613

PGGD: Oreo Gold Dust #9521

Dam: Lady Upson's Dream of Richfield #9577

MGS: Bestyet Dreamweaver #2558

MGGS: Lakenvelders Hildas Hector #2490

MGGD: O'Neill's Pearl Arbor #9046

MGD: Oreo PD Mohawk #9553

MGGS: Bestyet Perfect Day-ET #2636

MGGD: Oreo Gold Dust #9521

Comments: Very correct in his general conformation, not extreme, with an impressive balance of substance and feminine qualities. Feet and pasterns are quite good and general substance of bone suggests durability.



Bestyet HELPFUL

Stud Code 138DL4597

DBCAA Reg # 2813

Born March 25, 2009

aAa 126 (Dairy – Tall – Style)

We expect this young bull to be an udder specialist. His first calves are born easily and are very good starters, with ideal belted markings. His dam has proven herself as transmitter of her superior udder qualities and breed character. See his maternal sister on the front cover

SIRE: O'Neill's He-Man #2598

PGS: Bestyet James #2569

PGGs: Dutch Hills Starbuck #2534

PGGD: O'Neill's Jamie Hoffman #9191

PGD: Roxie Roxanne #9291

PGGs: O'Neill's Roscoe P Duke #2546

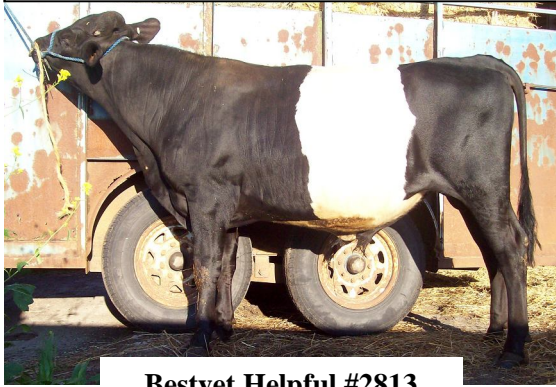
PGGD: O'Neill's Grand Mindy #9124

DAM: Bestyet Hans 817 #9716 (Pictured below)

MGS: Brink-Hans #2716

(Son of the great Hannah-B, see bottom)

MGD: Bestyet Gold 817 #B1842RC2



Bestyet Helpful #2813

Pictured on the farm at 15 mo



Helpful's 5-year-old dam

Bestyet HERCULES

Stud Code 138DL4437

DBCAA # 2804

Born September 25, 2008

aAa 312 (Open-Dairy-Tall)

Pinnacle of our Dutch Belted breeding efforts

We are really excited about the intense breeding this bull has for truly great udders and milk. He is a very good-looking dairy bull, too. His calves are upstanding, dairy, and angular.

Sire: Brink-HANS #2716

We have just a handful of Hans daughters and they are the best in the herd.

PGS: BRINK-Wash-Luke-Abub #2706

PGD: Hannah-B B1503Rc1

11-04 265d 12,697m 4.2% 532F 2.8% 361p

Dam: Bestyet Rox Alice #9703

MGS: Bestyet Roxie's Rocket #2670

Just calved again at 10 yrs 9 mo, looking as great as ever.

MGD: Bestyet Perfect Gem B3003Rc2

A high-producing Perfect Day dtr



Top: Rox Alice, Hercules' dam. Lower left: Hannah-B. Lower right: Paternal sister to Hercules, 4th lactation

BRINK-Wash-Luke-Abub
aAa 324156 (Open - Tall- Strong)

Stud Code 54DL04 DBCAA Reg. #2706
A2/A2 Beta-Casein Born 11/4/98



Brink's sire was O'Neill's Luke Duke Hoffman, Reg. # 2547, from the O'Neill herd of Manteno, IL

Brink Daughter record:

2-04 20,000m 3.6% 729f 3.0% 595p
3-07 16,670m 4.6% 768f 3.4% 564p
4-11 17,880m 3.6% 640f 3.3% 588p

Comments: We have observed that BRINK's breeding pattern is not as consistent as that of some of our more line bred Dutch Belted sires. This is to be expected from his outcross lineage. He is the sire of LOUIE, SAMMY, and GENTLEMAN. He is gaining popularity since he is proven A2/A2.

Brink's dam: Oreo-B at age 13 years, VG-88
From the Blaser herd of Tillamook, Oregon
Official DHIA: 12-04 305d 16,790m
4.8%f 798f 3.6%p 602p
Note the exceptional components and incredible youthfulness

Brink-SAMMY- Red Carrier
aAa 135 (Dairy-Open-Smooth)

Stud Code 54DL08 DBCAA Reg. #2711
Born 4/30/02



SIRE: BRINK-Wash-Luke-Abub #2706 (see above)

DAM: Brink-Savannah # B1511Rc2

3-07 429d 13,649m 5.2% 710F 3.2% 438p

5-00 253d 10,010m 3.8% 378F 2.9% 289p

5-10 340d 12,732m 4.0% 505F 3.2% 412p

6-09 94d 5,506m 4.0% 224F 3.0% 164P INC

MGS: Bestyet Zinger # 2615 (See page 6)

MGD: Hannah-B # B1503Rc1

11-04 265d 12,697m 4.2% 532F 2.8% 361p



Hannah-B:
Class. EX
Sammy's
maternal
granddam

Pictured at
age 13



Sammy's
oldest
daughter:
snug,
quality
udder, deep
body, will
to milk,
wonderful
disposition.

Bestyet GENTLEMAN-Red Carrier Stud Code 138DL3910 DBCAA Reg. # 2745
 aAa 4236 (Strong – Tall – Open) “Power, length of body, durable bone and good feet” Born 10/5/04



SIRE: BRINK-Wash-Luke-Abub #2706
DAM: Bestyet Zelma Lady-ET #9514
MGS: Dutch Hills Starbuck #2534
MGD: Dutchess Zelma “O” #9323
 2-09 485d 21,400m 3.5% 662f 3.5% 746p
 4-01 385d 19,800m 3.3% 669f 3.3% 658p
 See her photo on page 6



We love this fresh Gentleman daughter!

Brink-LOUIE
 aAa 261 (Tall-Style-Dairy)

Stud Code 54DL09 DBCAA Reg # 2712
A1/A2 Beta-Casein Born 6/15/02



Louie’s full sister’s official DHIA record:
 8-06 365d 23,330m 4.46% 1041f 3.25% 758p
SIRE: BRINK-Wash-Luke-Abub #2706 (see above)
DAM: Brink-Lacy # 9736
 8-00 279d 13,600m 4.5% 612f 3.1% 420p
 8-11 305d 19,670m 4.5% 880f 3.2% 638p
MGS: Bestyet Boston # 2594
MGD: Satin (Blaser Herd) # G061Rc1



Brink-Noel, maternal sister to Louie’s dam, age 5, topped the Vanden-brink sale at \$2350.



Louie daughter just fresh at 2 years

Bestyet ZINGER

Stud Code 138DL819

DBCAA Reg #2615

aAa 312(Open – Dairy – Tall)

Born April 14, 1992

Proven Red Carrier

SIRE: Dutch Hills Starbuck #2534**DAM:** Dutchess Zelma "O" #9323

2-09 485d 21,400m 3.5% 662f 3.5% 746p

4-01 385d 19,800m 3.3% 669f 3.3% 658p

(No dry period between)

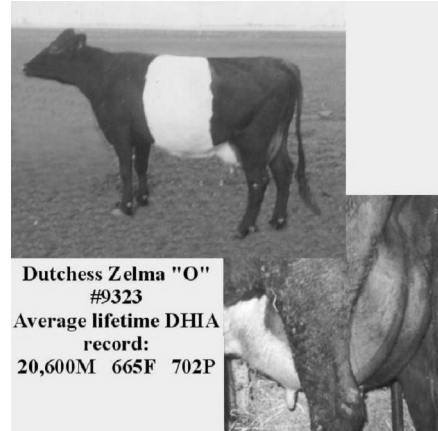
MGS: Bestyet James #2569

His dam: 3-05 365d 23,530m 778F 670P

MGD: O'Neill's Pearl Arbor #9046

5-03 401d 14,800m 3.4% 497f

+2,318 m over herdmates 95% reproductive efficiency

**Sampling of Zinger daughters' records:**

(In reading these records, note the calving intervals under 12 months)

2-01 16,870m 3.4% 575f 3.0% 501p

2-11 13,350m 3.3% 444f 3.2% 423p

3-11 19,840m 3.3% 653f 3.1% 614p

3-05 18,750m 3.4% 642f 3.2% 591p

4-06 22,840m 3.4% 786f 3.3% 746p

5-06 21,420m 3.3% 710f 3.1% 664p

2-05 14,960m 3.9% 583f 3.3% 493p

3-03 18,886m 3.7% 699f 3.2% 604p

2-10 16,272m 4.0% 649f 3.3% 536p

4-04 20,130m 3.4% 694p 3.0% 611p

4-06 18,330m 3.6% 669f 3.3% 608p

Comments: Bestyet Zinger has proven himself to sire well-marked offspring with true, consistent breed character: dairy, open, and not too big, with good milk components. He is an excellent choice for crossing with Holsteins or other breed cows to get Dutch Belted traits. He is line bred, which accounts for his very uniform breeding pattern.

Bestyet TWOFOLD Red Carrier

Stud Code 54DL02

DBCAA Reg # 2664

Born June 6, 1996

Proven Red Carrier

SIRE: Bestyet Zinger #2615 (See above)**DAM:** Bestyet Charming Tara Fancy #B0719.9325**MGS:** Bestyet Prince Charming #2593**MGD:** Bestyet Fancy Two-Twin #B0669.875

Pictured at right



Grayview GOLD DUST Stud Code 138DL1101
 DBCAA Reg. #2643 Born September 9, 1991

Sire: Grayview Ben's Best Goldie #2532
 Many daughters' records
 over 20,000m actual DHIA

Paternal Grand sire: Ben's Best #2231

Paternal Grand dam: Bettencourt

Dam: Grayview Number 639 #9479

2-02 325d 18,561m 713f 1731snf/prot

3-03 293d 20,153m 783f 1874snf/prot

4-02 344d 22,086m 791f 2054snf/prot

5-04 309d 18,922m 715f 1714snf/prot

6-05 351d 26,151m 994f 1685snf/prot

Maternal Grand sire: Dutch Hills Starbuck #2534

Actual DHIA of dam:

3-09 288d 18, 310m 832f

4-09 294d 19,520m 738f

5-09 336d 22,430m 846f 1988snf/prot

6-11 288d 18,580m 582f 1658snf/prot

7-11 345d 24,070m 808f 2181snf/prot

9-02 305d 22,040m 785f 1900snf/prot

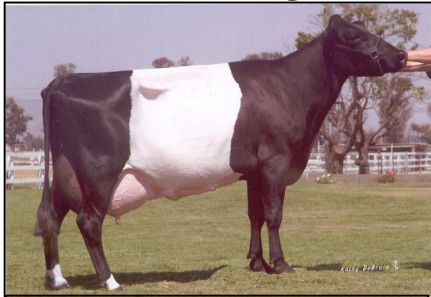
Maternal Grand dam: Grayview Number Fifteen #B886.50

Actual DHIA

6-02 328d 19,480m 855f 1787snf/prot



Gold Dust daughters are showing capacity, good udders, and MILK:



Brink-Alicha #9738 6-02 22,260m
 4.0% 880f 3.1% 689p



Bestyet ZORRO

Stud Code 138 DL 2643

DBCAA Reg. #2690

Born March 10, 2000

aAa 561 (Smooth-Style-Dairy)

Sire: Bestyet Apple Cider #2613
 Daughter udder shot at right

PGS: Bestyet Big "O" #2603

PGD: Princess Rosa "O" #9322

Dam: Bestyet Zinger Rosa #9490

MGS: Bestyet Zinger #2615 (See page 6)

MGD: O'Neill's Rosa Hoffman #9190

This cow had no James blood.



Bestyet Roxie's ROCKET

Stud Code 54DL03

DBCAA Reg # 2670

aAa 543 (Smooth – Strong – Open)

Born June 23, 1998

SIRE: Grayview Gold Dust #2643

(See previous page)

DAM: Bestyet O'Roxie #9439

MGS: Bestyet Big "O" #2603

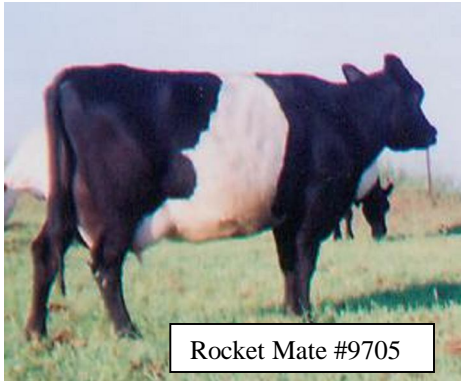
MGD: Roxie's Rosie "O" #9402

Sired by Bestyet Prince Charming #2593

Rocket's dam at 8 years, in her winter clothes.



Pictured below are two of our purebred Rocket daughters at age 5



Rocket Mate #9705



Rox Alice #9703

Comments: Rocket's cow family and daughters are powerful dairy cows with volume, capacity, great vigor, and quality udders. He adds more substance, strength, and smoothness than the typical Dutch Belted sire.

Bestyet UNIVERSAL



SIRE: Bestyet Roxie's Rocket #2670 (See above)

DAM: Bestyet Zinger Prissy #9547

This mighty little linebred cow embodies the best of breed character, efficiency, hardiness, longevity, and transmitting ability.

MGS: Bestyet Zinger #2615 (See page 6)

MGD: Bestyet Charming Prissy #9428

Same cow family as Zelma, Zinger's dam

Stud Code 138DL3932

DBCAA Reg. # 2772

aAa 315426 (Open-Dairy-Smooth)

Born 4/08/06 **A1/A2 Beta-Casein**

Universal's first fresh daughters are like his dam: Productive, compact in size, and with snug udders. My favorite Universal daughter is pictured at right. Her dam was an Apple Cider daughter of Rox Alice (Rocket dtr), so she is line bred several ways.



Bestyet STARDUST

Stud Code 138 DL 2644
 DBCAA Reg. #2691
 aAa 324 (Open-Tall-Strong)
 Born May 11, 2000

Sire: Grayview Gold Dust #2643
 (See page 7 for his pedigree)
Dam: Bestyet Starberry #9462
MGS: Dutch Hills Starbuck #2534
MGD: Bestyet Mayberry #9389

Comments on Stardust:

His dam, like all of her cow family, had a long-lasting, snug, fine quality udder with easy milkout. She was a very vigorous and hardy cow, which we had for more than 10 years.

Stardust is a bull we are going back to using as his offspring are impressive not only in their excellent belted markings but for their strong and capacious build and vigor.

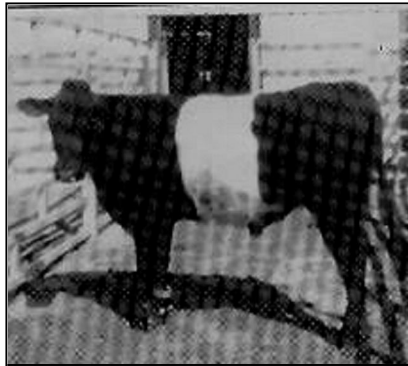
Sir Upson MOHICAN Red
 aAa 5614 (Smooth-Style-Dairy)

Stud code 138DL3677

DBCAA Reg # 2760
 Born 10/28/2005

SIRE: Kaczorowski's Threeway Acres South Star #2626
PGS: Mr. John's Laddy #2289
PGD: Valley Farm Beauty #8555
DAM: Lady Upson's Jordanville Red Dream-ET #9578
MGS: Bestyet Dreamweaver #2558
MGD: Oreo Gold Dust #9521

Comments: This young bull has good type, especially feet and legs. His first calves show typical breed character. Some of the calves out of non-Dutch Belted cows have very wide belts, being mostly white. Reported to have at least one gene for A2. Brian Thornton has Mohican dtr that in 200 days has produced 11,361m 3.2%f 3.4% p.



Bestyet PERFECT DAY-ET
*Excellent Components
 and
 Calving Ease*



Perfect Day daughter, fresh at 25 months, projected 13,500m 4.0%f

Bestyet PERFECT DAY-ET
 Stud Code 138DL1084
 DBCAA Reg # 2636
 aAa 231(Tall – Open – Dairy)
 Born August 12, 1994
A1/A2 Beta-Casein

Perfect Day daughter records (note exceptional components):
 2-0 14,240m 4.4% 625f 3.5% 497p
 2-02 14,380m 4.0% 577f 3.4% 482p
 2-01 15,600m 4.6% 717f 3.4% 538p

SIRE: Lakenvelder's Supreme Sunday #2509
PGS: Davie B of Tillamook #2400
PGD: Vickerman Hill Supreme #8495
 Gr Champion, World Dairy Expo '75-6
 10-yr-old record 13,506m 3.7% 503f

DAM: Dutchess Zelma "O" #9323
 (Same dam as Bestyet Zinger, see p 6)
 2-09 485d 21,400m 3.5% 662f 3.5% 746p
 4-01 385d 19,800m 3.3% 669f 3.3% 658p

Comments: Perfect Day sires moderate-sized daughters with capacious udders and good test. He is a calving ease sire. Will sire some all black calves out of other breed dams.

We collected an ample supply of semen and are glad we did, hence we are able to offer him for a lower price for a limited time.

Sir Upson Duke of FINDLAY Stud Code 4800
aAa 612 (Style-Dairy-Tall) Classified Very Good 85

DBCAA Reg. #2744
Born Feb. 27, 2005



SIRE: Bestyet Dreamweaver #2558
PGS: Lakenvelder's Hilda's Hector #2490
PGD: O'Neill's Pearl Arbor #9046
5-03 401d 14,800m 3.4% 497f
+2,318 m over herdmates 95% repro. Efficiency

DAM: Brink- Savannah #9631 (Pictured below right)
3-07 429d 13,649m 5.2% 710F 3.2% 438p
5-00 253d 10,010m 3.8% 378F 2.9% 289p
5-10 340d 12,732m 4.0% 505F 3.2% 412p
6-09 94d 5,506m 4.0% 224F 3.0% 164P INC

MGS: Bestyet Zinger #2615 (See page 6)
MGD: Hannah-B (See picture on page 4, udder shot below left) 11-04 265d 12,697m 4.2% 532F 2.8% 361p

COMMENTS: This bull not only comes from one of the breed's best cow families for longevity and snug udders, but he is line bred to another superior cow family, notably the Swett Farm Dennis daughter O'Neill's Pearl Arbor, Zinger's maternal granddam, one of the first cows my husband identified 30 years ago as a prime bull mother. First calves are very typy.

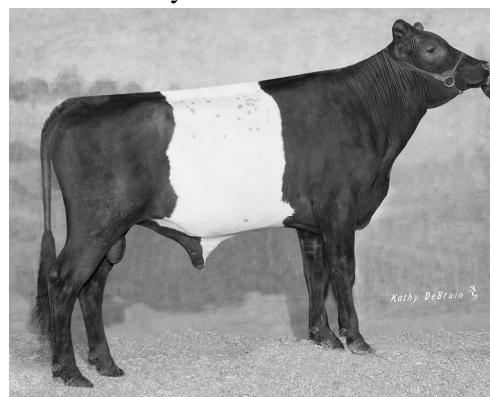


Bestyet SNAPPY Stud Code 138DL4184
aAa 5461 (Smooth-Strong-Dairy)

DBCAA Reg. #2787
Born Sept. 5, 2007

SIRE: Bestyet Apple Cider #2613 Apple Cider has proven his ability to sire silky-uddered and very dairy cows with tremendous breed character.
PGS: Bestyet Big "O" #2603
PGD: Princess Rosa "O" #9322

DAM: Bestyet Zinger Prissy #9547
See photo on page 8 at 12 years of age. Whole family are small with excellent udders.



COMMENTS: This promising young bull is a compact and line bred package of our best genetics. Not only does the great Zelma appear in his pedigree twice, but so does O'Neill's Lucky Lady #9044 (see picture above right), a daughter of Swett Farm Dennis #2399. Snappy's offspring are well-marked, small birth weight, nice type, and **very** zippy. His first fresh daughters are moderate in size and production.



Rojahns BASS PLAYER-ET

Stud Code 138 MS 3461 AMSS # 462441

aAa 162354 (Dairy-Style-Tall)

Born October 20, 2004

Sire: Pinehurst Rebel 9th 423595

PGS: Prairie-Pine Pete 6th 418449

PGD: Pinehurst Ruby Rucinda 7th-ET 419041

Dam: Kingsdale Elizabeth 12th 431531

3-04 16,370m 3.9% 631f 3.3% 543p

5-07 17,700m 3.7% 648f 3.5% 621p

6-08 16,390m 3.4% 555f 3.2% 523p

MGS: Kingsdale Supreme 423335

MGD: Kingsdale Elizabeth 6th 426447

Comments: This is a tall, sharp type dairy bull.

Two of his daughters are pictured below.

Brian Thornton in Indiana has a Bass Player daughter projected at 20,500 4.0 f 3.0 p first lactation, and she bred back first service



Two of our Bass Player daughters

Meriville MILK MORE-P

Stud Code 54 MS 43

AMSS # 446951

Born June 27, 1998 Roan

aAa 543612 (Smooth – Strong – Open)

Daughter average 16,561m 4.0% 656f

3.2% 534P

Sire: Meadowbrook Chieftain 9th P #329245

The 2d highest proven straight

American bull while in active AI in

the 1980's, with +947m +26f

PGS: P-Meadowbrook Premier 3d 307974

PGD: P-Meadowbrook Lassie 3d 182291

Dam: Meriville Pansy Cissy #420853

Full sister to Meriville Peerless

MGS: Meriville Plumchuck #409424

Classified Excellent, Plus Proven

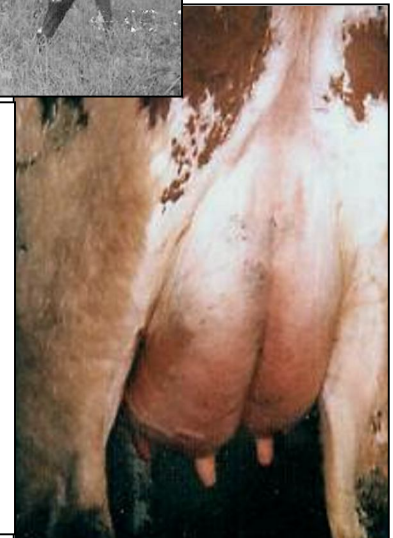
MGD: Meriville Satin Roansy Cissy

#406482 Classified Excellent EVVE

305-2X-ME 16,820M 3.8% 639F

3.7% 622P

Comments: Milk More-P sires daughters with strength and substance, good udders, and good test. Customers who are testing cows for Beta-Casein report he transmits the A2 genotype. See daughter on cover.



Milk More-P daughters:

Above, a just-fresh daughter at John Hastings' in PA.

At right: Udder shot of a Milk More daughter in the Cantagree herd in Utah.

Introducing two bulls that will painlessly dehorn all your calves

DNA test shows these polled bulls to be homozygous, thus all their calves will be naturally polled, even out of horned cows.



Meriville OUTSTANDING-P

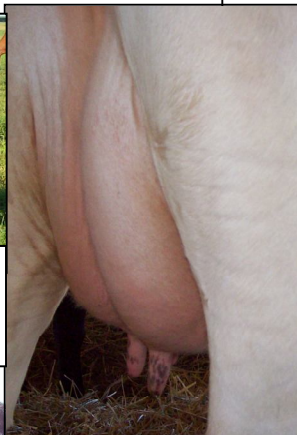
Stud Code 138MS3636
AMSS Reg # 461989
aAa 354216 (Open – Smooth – Strong)
Born April 19, 2005
Sire: Mericrest Outlaw 437226
Full sister: Mericrest Kewpie (Photo on p 15)
PTA: +631m –3f +14p +33NM\$ 95%R
Dtr ave: 18,259m 3.4% 626f 3.1% 557p
PGS: Meriville Peerless 420146
PGD: Meriville Spring Cutie Gulman
411309 (Photo on p 15)
6-5 365d 21,820m 3.6% 786f 3.4% 752p
Dam: Meriville Maylu Ruby-P 450382
Prolific and functional cow family
MGS: Cantagree Matchless Duke-N 442481
MGD: Meriville Morlu Ruby-P (Peerless dtr)

Meriville OUTER STAR-PP

Stud Code 138MS4928
AMSS Reg #68307518 Red w/ little white
aAa 516 (Smooth – Dairy – Style)
Born Sept 1, 2010
Sire: Meriville Outstanding-P (see left)
Dam: Meriville Shooting Star-P
#68307517 (She is the top of the 2
Bass Player dtrs pictured on p 12)
MGS: Rojahns Bass Player-ET #462441
(see page 12)
MGD: Meriville Royal Star-P #68307516
Her sire: Meriville Prince Edward
Comments: The aAa analyzer noted that this
is a sturdy, well-fronted bull who moves freely
with spring of rib, good structure in pasterns
and hocks, clean tail setting and clean pins. He
is growthy and matured early. We have an
ample supply of semen. First daughters show
sturdy, dual purpose type.



Above: Outlaw dtr. At right and below: 2-yr-old Outstanding daughters. He sires compact, correct cows with neat, snug udders. Calving ease is great.



Brian Thornton has an Outstanding P dtr (not pictured) that made this record:
320 days 23,072 milk 703 Fat 713 Protein

Meriville BLIZZARD-PP

Stud Code 138MS4854
AMSS Reg #68306996 White
aAa 5341 (Smooth – Open – Strong)
Born May 13, 2010
Sire: Meriville Milk More-P (see p 12)
Dam: Meriville Fluffy Top Lady-P
#68301618
MGS: Meriville Outstanding-P (see left)
MGD: Meriville Lassy Winsome Lady-P
#450082
Comments: This is a strong-loined animal
with good width in the front end.
Disposition of this bull and his dam is a
little nervous. Our semen supply is quite
limited at this time.

Cantagree MATCHLESS DUKE-N

High Components, Vintage Genetics

Stud Code 54MS44

AMSS Reg #443481

Born March 13, 1998

Daughter Average 14,671m 3.9% 572f 3.3% 482p

Sire: McKee's Matchless Dairyman 325801

Born in 1966

Daughter average fat test 3.8%

(Not tested for protein)

PGS: Lilydale Dairyman 4th 272215

PGD: McKee's Matchless Irma 2d 274365

6-5 14,760M 4.8% f 702F

Dam: Cantagree Duchess of Cache 434242

Pictured below Actual DHIA:

2-04 305d 11,190M 4.1% 457F 3.5% 381P

3-04 296d 13,150M 4.2% 553F 3.5% 459P

4-04 305d 15,000M 4.0% 600F 3.6% 537P

5-06 288d 14,480M 4.0% 572F 3.4% 498P

6-06 305d 15,090M 4.0% 609F 3.5% 521P

MGS: Lagos Cache Winner 345710

Born in 1969

Average daughter protein deviation +.35%

MGD: Hiibner's Red Lady 406487

Actual DHIA Lifetime 138,070M 5191F 4755P

3-02 264d 12,610M 3.7% 469F 3.2% 407P

4-01 301d 14,010M 3.8% 529F 3.4% 476P

5-01 337d 15,220M 3.8% 576F 3.3% 512P

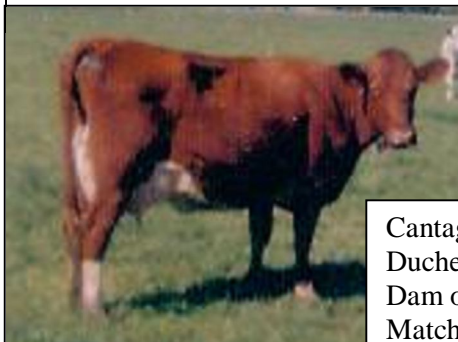
6-02 381d 17,180M 4.1% 703F 3.4% 591P

7-05 277d 13,730M 3.7% 511F 3.4% 471P

8-06 305d 14,590M 3.9% 570F 3.5% 516P

9-07 329d 15,930M 3.6% 566F 3.5% 561P

10-07 339d 13,130M 3.6% 471F 3.6% 475P



Cantagree
Duchess of Cache.
Dam of Cantagree
Matchless Duke

Cantagree LORD BATES 3d

Stud Code 99MS6501

AMSS Reg#467221

aAa 426 (Strong-Tall-Style)

Born March 30, 2007

This attractive young bull is uniquely line bred in at least three ways to individuals generally different from our herd, using some of the better bloodlines in the breed for moderate-sized, long-lived cows with good milk production and test.



SIRE: Meriville New Millenium #450912

(See page 16 for his pedigree)

DAM: Cantagree Linda Bates 16th #445764

Her photo here was taken during her 8th lactation.

2-04 266d 9,800m 3.9% 381f 3.1% 300p

3-02 342d 15,470m 3.5% 548f 3.1% 478p

4-03 250d 11,510m 3.9% 445f 3.2% 370p

5-01 283d 13,800m 3.5% 489f 3.1% 434p

6-00 296d 14,680m 3.9% 566f 3.1% 451p

7-01 296d 12,430m 3.7% 461f 2.9% 362p

8-00 284d 13,870m 3.5% 490f 3.0% 415p

9-00 291days 16550m 3.6% f 2.8% p RIP

Due again at 10-00

MGS: Idalee Grand Benefactor #424434

His dam, Idalee Grand Dahlia, had these

records (with higher energy feeding):

2-07 265d 16,340m 3.4% 556f 3.3% 539p

3-06 286d 17,480m 3.7% 647f 3.1% 542p

4-06 305d 19,560m 3.9% 763f 3.2% 626p

5-07 305d 20,100m 4.1% 824f 3.3% 663p

6-08 305d 21,500m 3.7% 796f 3.7% 796p

7-10 287d 20,850m 3.5% 730f 3.3% 688p

8-09 305d 23,130m 3.8% 879f 3.2% 740p

10-00 305d 19,580m 4.0% 783f 3.5% 685p

11-00 305d 18,480m 3.4% 628f 3.3% 610p

12-05 305d 20,580m 3.7% 762f 3.1% 638p

MGD: Cantagree Linda Bates 7th #436116

1-10 308d 11,410m 3.3% 382f 3.4% 384p

2-10 274d 13,150m 3.2% 419f 3.3% 434p

3-09 311d 14,750m 3.2% 466f 3.3% 487p

4-09 271d 15,730m 3.2% 496f 3.3% 514p

5-09 317d 17,620m 3.1% 552f 3.0% 532p

6-09 256d 14,540m 3.0% 442f 3.1% 456p

7-09 proj 305d 15,400m 3.3% 515f 3.0% 467p

Her dam: Cantagree IQV Linda Bates

2-00 279d 11,350m 3.6% 414f 3.3% 376p

3-00 293d 12,930m 3.8% 493f 3.6% 460p

3-11 329d 15,720m 3.9% 615f 3.4% 532p

4-10 373d 17,580m 3.9% 678f 3.5% 622p

6-00 258d 14,080m 3.7% 518f 3.3% 471p

6-10 305d proj 17,220m 3.6% 613f 3.3% 559p



The Cantagree Milking Shorthorn herd in Utah is a grass-based organic dairy with a breeding program that we highly respect. They use rotational grazing, feeding a rolled barley grain mix at the rate of 6-12 pounds per cow per day, and have experimented with no-grain over the winter. So, they are not feeding for maximum production. Note also the excellent calving intervals and longevity.

Mericrest PICASSO

A1/A2 Beta-Casein Stud code 120 MS 593 or 138MS2649 AMSS Reg. # 438934

aAa 456 (Strong – Smooth – Style) Born 3-9-96 Red

Daughter Average 17,475m 3.7% 650f 3.2% 560p

Some of his many fine daughters pictured below

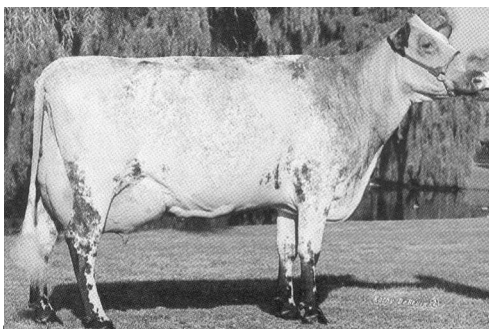


Sire: Ridgewood Tracy 329732

Born August 29, 1966

10x Grand Champion

Dam: Mericrest Kewpie 427426



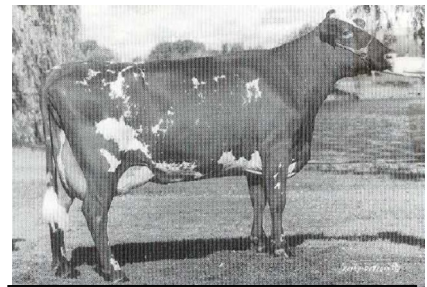
Mericrest Kewpie EX93 93-94-92-92-92
 5-10 304d 21,265m 3.7% 793f 3.5% 744p
 6-9 340d 28,421m 2.9% 822f 3.5% 992p
 World Dairy Expo Champion 5 years
 Supreme Champion, Illinois State Fair

Paternal Grand sire: Spring Brook Robin Hood 260794
 Top proven Curtis Breeding Service sire in '60's and '70's
 His dam: 11-8 mo 15,425 lb milk 3.9%f 603F

Paternal Grandam: Ridgewood Obee 290059
 5-9 363d 13,590m 4.3%f 580F Her sire was Griffarm
 Designer (sired by Lou's Protector, top sire of Record of
 Merit daughters), who sired 2 Natl Gr Champ cows and
 winning Get of Sire at National 3 years in a row. Her
 dam at 9yr 1 mo made 18,360m 4.0%f 740F.

**Maternal
 Grand sire:**
 Meriville Peerless
 In top 10 of North
 American proofs 6+
 years

Maternal Grandam:
 Meriville Spring Cutie
 Gulman
 411309



Meriville Spring Cutie Gulman
 411309 **Excellent-90**
 6-5 2X 365d 21,820m 3.6% 786f
 3.4% 752p

Meriville FLASHBACK

Stud Code 138MS3420

AMSS #461962

aAa 651 (Style – Smooth – Dairy)

DOB 5/17/00

A deep red dual-type Milking Shorthorn sire

With a pedigree rich in history. Great feet and legs.

SIRE: Henzler's Revival of Glenside 441716

PGS: Erora Majesty-N 228867

PGD: Henzler's Clay Lady 441711

DAM: Meriville More Sally 461956

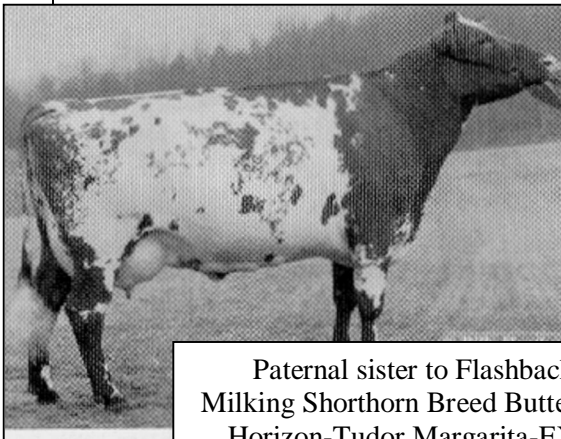
MGS: Meriville Peerless 420146

This famous, linebred sire was solidly plus proven for milk for years on end in U.S. and abroad.

MGD: Meriville Satin Sally 402600

305d 18,000m 3.8% 672f 3.5% 548p

Her sire was the great Meriville Sumthun Else, her dam close descendant of Rosemont Red Sally 12th, highest butterfat producer in Illinois



Paternal sister to Flashback's dam
Milking Shorthorn Breed Butterfat Leader:
Horizon-Tudor Margarita-EXP 2E93
5-07 365d 28,979m 4.9% 1,420f 3.2% 926p

Meriville ROCK COUNTY

Stud Code 54 MS 53

AMSS 451276

Born 9/6/00

Roan

aAa 561 (Smooth – Style - Dairy)

SIRE: Cherry Key Signet #341403

Born Oct 2, 1968

PGS: Pinesedge Cherry Key #306246

PGD: Princess Martha Clay #314701

VG 88 2 yr 13,394 M 474 F

DAM: Meriville Pansy Cissy #420853

Full sister to the great Meriville Peerless

MGS: Meriville Plumchuck #409424

Classified Excellent Plus Proven

MGD: Meriville Satin Roansy Cissy

#406482 EVVE 305-2X-ME 16,820M

3.8% 639F 3.7% 622P



Rock County's oldest daughter at 5 yrs.

Meriville NEW MILLENIUM

Stud Code 120 MS 571 Reg. # 450912

Born September 30, 1996

Sire: Idalee Hillholm Design 397129

Sired extremely high components

PGS: Lagos Cache Winner 345710

Also a high components sire

PGD: Hillholm Fancy Dahlia 353917

Extreme lifetime production

Dam: Meriville Satin Roansy Cissy 406482

Dam of Meriville Peerless

Classified Excellent E V V E

305-2X-ME 16,820m

3.8%f 639F 3.7%p 622P

MGS: Meriville Sumthun Else 385850

MGD: Meriville Plum Cissy 2d 39844

Comments: This bull's pedigree indicates the genetics for high components test.



Two New Millenium daughters just fresh as two-year-olds in the Cantagree Herd. Thanks to Darren Wold for the photos.



Meriville KING OSCAR-P 462685

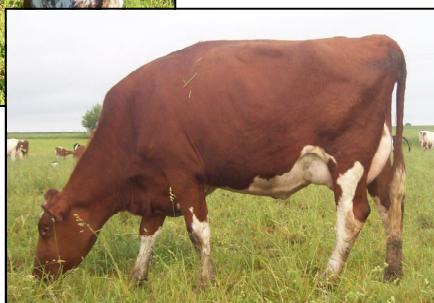
Stud Code 138MS3635 **A1/A2 Beta-Casein**
 AMSS Reg # 462685
 aAa 216435 (Tall – Dairy – Style)
 Born May 23, 2005
Sire: Mericrest Picasso 438934 (See page 15)
 Dtr ave: 17,475m 3.7% 650f 3.2% 560p
PGS: Ridgewood Tracy 329732
PGD: Mericrest Kewpie 427426 (See p 15)
Dam: Meriville Queen Glisten-P 452256
MGS: Meriville King Arthur 419478
His dam: Meriville Satin CVS Maid 409423
 Very Good 87
 4-01 15,390m 3.8%f 578f 3.5%p 539p
MGD:Meriville More Glisten-P 451852 (Peerless dtr)



Dam of Meriville King Oscar-P, just fresh at the age of eleven years! Photo by Rolland Jahns



King Oscar daughters tend to be taller and sharper than some of our other cows, with great depth of rib, and milky udders.



Rojahns Iris NKT LANCER N ET P

A2/A2 Beta-Casein
 Stud Code 54MS67
 AMSS Reg # 68307340
 aAa 513 (Smooth – Dairy – Open)
 Born 3/12/08
Sire: Nodak King’s Tradition –N
 #348533 (Born in 1970)
PGS: King Roan Beauty #309969
PGD: Nodak Countess Trudy
 #295222
Dam: Homeplace HS Blaze Iris-P
 #450896
MGS: Homeplace DC Sampson-N-P
 #439253
MGD: Homeplace SB LC Roan Iris-
 N-P #441141

Comments: Lancer’s sire and dam are both line bred from different lines than our herd.

His dam is over 10 years old and has freshened in 12 months or less most of her productive life. She is medium in stature with a strong loin and an udder that is still snug and good quality, with quick and complete milk-out. She has a calm and workable disposition.

The aAa analyzer commented on the width this bull has all the way back, his spring of rib, a certain amount of refinement, and his ease of walking. Lancer is proving to be a calving ease bull.

Lapp’s JOE Stud Code 138MS3460

Reg #461269 Born July 4, 2004
 aAa **345** (Open – Strong – Smooth)
Sire: Meriville Rock County 451276 (p 17)
Dam: Hauxwell Bessie Jo 24th 461263
Her sire: Mericrest Outlaw 437226

A1/A2 Beta-Casein

Comments: This is a very good-looking roan bull, flat-boned yet with strength and depth. He was selected by my late husband from one of the best cows of Tom Ripley’s herd in Canada. Joe is heavily line bred Peerless. Our oldest Joe daughter is a strong and open heifer with a flawless udder, an extremely good-doer.

Meriville MATCHMAKER-P

AMSS Reg #68301663

Born June 5, 2008, Roan

aAa 6125 (Style-Dairy-Tall-Smooth)

Vintage Milking Shorthorn genetics

Sire: Meadowbrook Chieftain 9th-N-P #329245
(1966 Sire of our well-liked Milk More-P bull)**PGS:** P-Meadowbrook Premier 3d #307974**PGD:** P-Meadowbrook Lassie 3d #182291**Dam:** Meriville Pick A Match Ruby #461970**MGS:** Mericrest Picasso #438934
18 dtr ave 17,363m 3.8 633f 3.2 550p**MGD:** Meriville Matchless Ruby #461958
A dtr of McKee's Matchless Dairyman**Comments:** Matchmaker's first calves are uniformly small birthweight, vigorous and thrifty.

Matchmaker-P's dam at work

Polled Jersey Sires

We have been offering old-fashioned type Jerseys from breeders we respect and know are selecting for high components, functional type, and longevity. We list one here, others may become available after this catalog is printed, so check with us if interested.

FRANTASTIC OF DOCSHERD-P Stud Code 179JE107 Born 2/23/10**A2/A2 Beta-Casein**

Reg. # 117385379 Heterozygous Polled

aAa 216453 (Tall -Dairy- Style)

SIRE: Mayor of Reber-PP 114428110**PGS:** Elsmere-P 113031296**PGD:** Johnreber Wonsoc Beni Magic-P 113031362

2-0 305d 14,310m 5.1% 724f 3.5% 500p

3-2 305d 15,560m 5.5% 850f 3.6% 556p

4-5 305d 15,280m 5.0% 769f 3.7% 561p

5-10 305d 12,980m 4.8% 622f 3.7% 480p

DAM: Johnreber Zulu Vision Fran-P 111859324

1-11 302d 9,350m 5.6% 522f 3.6% 334p

3-01 305d 12,730m 5.4% 685f 3.7% 475p

4-06 305d 12,390m 5.5% 679f 3.9% 483p

5-07 300d 11,920m 5.8% 686f 3.8% 447p

6-07 305d 11,330m 5.6% 631f 3.9% 439p

7-08 305d 12,940m 5.5% 711f 3.7% 481p

8-10 305d 13,090m 5.0% 649f 3.8% 501p

9-10 305d 11,490m 5.4% 616f 3.8% 441p

MGS: Netherall Night Vision-P 110150196**MGD:** Johnreber Hof Zulu Fran 003959818

2-08 305d 13,240m 5.2% 687f 4.0% 533p

3-10 305d 14,530m 5.7% 828f 3.9% 573p

5-01 305d 13,400m 5.2% 701f 3.9% 523p

6-01 305d 11,850m 5.1% 610f 3.8% 446p

7-01 305d 11,710m 5.1% 596f 3.9% 462p



FRANTASTIC OF DOCSHERD-P

bestyetaisires@juno.com

BESTYET A.I. SIRES

Winifred Hoffman

4279 E. 12th Rd.

Earlville, IL 60518

Ph (815) 246-9523



View entire catalog and newsletters at
www.bestyetaisires.com