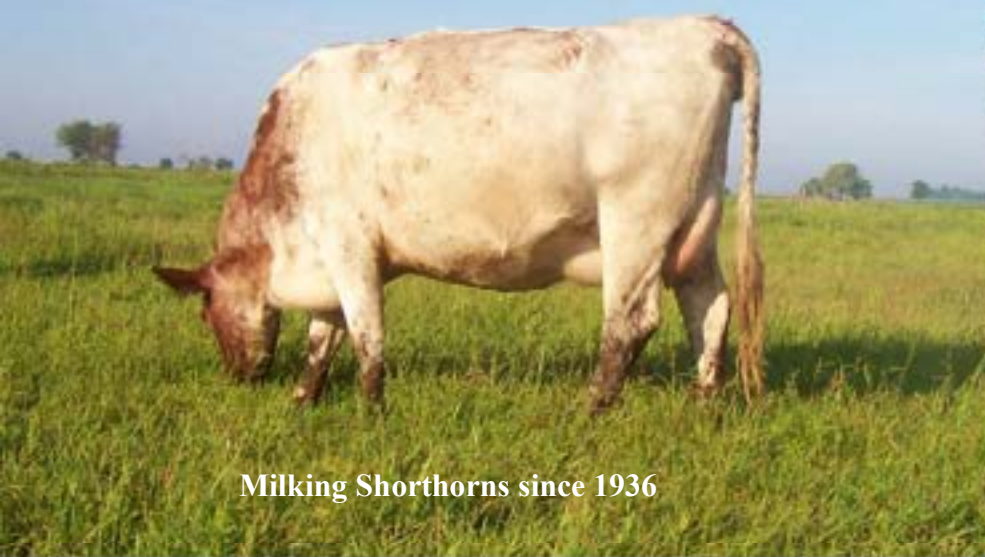


Bestyet A.I. Sires

2025 Semen Catalog

Grass-based genetics for
sturdy, productive cows

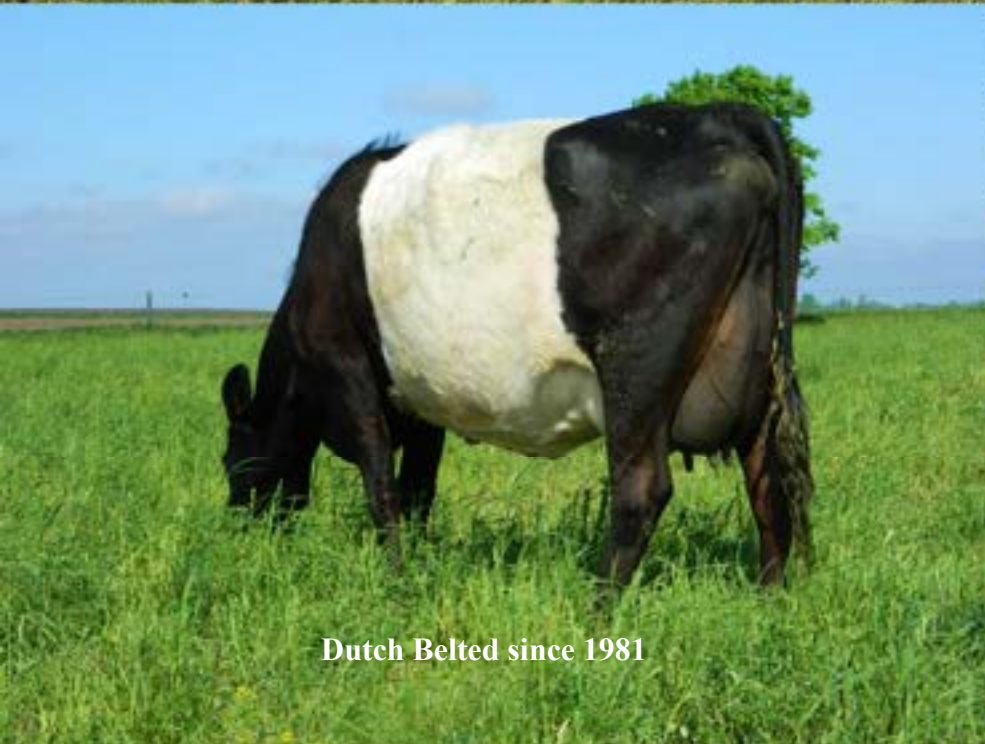
Winifred Hoffman and Family
4279 E 12th Rd
Earlville, IL 60518-6079
(815)246-9523
(815)826-0241
bestyetaisires@gmail.com
www.bestyetaisires.com



Milking Shorthorns since 1936



*Still Grazing
After All These Years*



Dutch Belted since 1981



Spring 2025 Bestyet A.I. Sire Price List

5-straw minimum order, \$15 handling charge for splitting canes. Prices and availability subject to change.

Dutch Belted – Registered with the Dutch Belted Cattle Association of America

RC = Red Carrier P = Heterozygous Polled

<u>Name</u>	<u>Beta Casein</u>	<u>Page</u>	<u>aAa</u>	<u>Stud Code</u>	<u>Price per straw</u>
BRINK	A2/A2	5	324156	54DL04	\$35
FAMOUS-P	A2/A2	5	351462	54DL11	\$30
FINDLAY	A1/A2	6	612	4800	\$30
FORTIFIED-P	A1/A2	6	162	138DL5111	\$30
HELPFUL		7	126	138DL4597	\$40
PERFECT DAY-ET	A1/A2	7	231	138DL1084	\$16
RED LEGACY	A1/A2	8	261	138DL5184	\$18*
ROCKET		8	543	54DL03	\$16*
SAMMY-RC	A1/A2	9	135	54DL08	\$20*
STARDUST	A2/A2	9	324	138DL2644	\$40
TILLAMOOK	A1/A2	10	315	138DL1082	\$20
TRAILBLAZER RED	A2/A2	10	126435	54DL12	\$19*
ZINGER-RC	A1/A2	11	312	138DL819	\$20
ZORRO	A1/A1	11	561	138DL2643	\$20

Milking Shorthorn – Registered with the American Milking Shorthorn Society

P = Heterozygous Polled PP = Homozygous Polled (100% Dehorner)

BASS PLAYER	A2/A2	13	162354	138MS3461	\$15*
DAOSTA-N-P	A2/A2	13	351624	99MS11370	\$20*
FANFARE -N-P	A1/A2	14	153624	99MS8047	\$40
FELIPE-N-P	A2/A2	14		99MS12782	\$20*
FLASHBACK	A1/A2	15	651	138MS3420	\$15*
JOE	A1/A2	15	345126	138MS3460	\$10*
KING OSCAR-P	A1/A2	16	216435	138MS3635	\$10*
LORD BATES 3d	A1/A1	16	426	99MS6501	\$20
MATCHMAKER-P	A1/A1	17	6125	138MS4436	\$25
NEW MILLENIUM	A1/A1	17		120MS571	\$10*
OUTER STAR-PP		18	516	138MS4928	\$12*
OUTLAW	A1/A1	18	354126	138MS1254	\$10*
OUTSTANDING-P	A1/A1	19	354216	138MS3636	\$13*
PEERLESS		19		138MS429	\$75
PICASSO	A1/A2	20	456	138MS2649	\$15*
ROCK COUNTY	A1/A1	21	561	54M53	\$10*
WILDFLOWER-PP	A1/A2	21	435612	138MS5908	\$20

Milking Devon – Registered with the American Milking Devon Association

MOSES	A1/A1	22		138DE944	\$25
SAMSON	A1/A2	22		138DE943	\$30

***Volume Discounts:** These deductions apply only to bulls with *

Deduct \$2 per straw for orders totaling 40-59 straws (order can include non-discounted bulls)

Deduct \$3 per straw for orders totaling 60-99 straws (order can include non-discounted bulls)

**SHIPPING AND TANK RENTAL FREE for orders \$550 and over, only \$50 shipping/tank rental for \$350-\$549
Orders under \$350 pay \$140-\$155 depending on region. Contact us for a quote.**

About Bestyet A.I. Sires



We are family dairy breeders in Illinois. Our Milking Shorthorn herd was established 89 years ago by my late husband's parents. Dutch Belted were added to the herd 44 years ago.

My daughter Martha and her husband are my partners in the breeding endeavor.



We have always selected for long-lived, well-uddered, trouble-free cows that calve and milk efficiently and sustainably. We emphasize truly balanced dual-purpose traits. Other grass farmers began to seek us out for genetics to improve their herds.

We are experienced at the art of line breeding for more uniform quality.

These cattle are well-adapted to grass-based dairying and will also fit in family homesteads.

With the longevity of our cows, we regularly have foundation females available, usually as calves. We sell bull calves for herd sires by pre-order.

About This Catalog

We use as many pictures as we can, even though sometimes the animals were just in their "working clothes." We don't breed for show winners, but functional type is very important to us, especially foot and leg structure and mammary systems. Feel free to send us photos of results of using our sires in your herd.

We have provided milk records where available, even though calving interval, feed efficiency and longevity may be even more important. Some of the records are from conventional herds.

We offer volume discounts and discounted or free shipping for qualifying orders.

You will find an order blank on page 23. Email us if you'd like to pay online, and we'll email you an invoice to pay with a credit or debit card or Paypal account. There is a 4% fee for using this service, to cover Paypal costs.

From our family to yours, thanks for letting us serve you.

About the Results

"We are finding our Shorthorn and Dutch Belted crosses to have decreased vet bills significantly. None of them have ever required milk fever treatment. We are finding increased milk components, decreased vet bills, lower purchased grain bills, and ease of handling."

Gerald, dairyman in Wisconsin

"You have a goldmine in that Zinger bull! Udders and milk-out are great, and the cows are just the right size."

Cathy, dairywoman in Michigan



"Thanks again for keeping these genetics alive. I'm very excited for our herd in the future."

Seth, dairyman in Nebraska

"We like your bulls for calving ease, disposition, and nice udders."

Dan, dairyman in Minnesota

"Our non-farming neighbors always want the milk from our bulk tank instead of milk from Holstein herds, because they prefer the taste of our Dutch Belted milk."

John, dairyman in Indiana

What Can You Expect from Us?

- ~ Prompt, personal service
- ~ Genetics you can't find anywhere else
- ~ Longstanding commitment to these unique and valuable bloodlines
- ~ Mating advice from our years of breeding experience
- ~ We are farmers, too!

What Can You Expect from Our Genetics?

- ~ Good grass-based milk production with or without grain
- ~ Hardy, long-lived cows of moderate, practical size
- ~ Calving ease and vigorous calves
- ~ Freedom from metabolic disorders (like milk fever and ketosis)
- ~ Dairy strength
- ~ Sound feet and legs, hoof-trimming rarely needed
- ~ Great body capacity for forage utilization

Distinguishing Traits of our Milking Shorthorns

Our Milking Shorthorn breeding program is unique as we are preserving the heritage traits of balanced milk and meat production.

- ~ Sturdier than mainstream Milking Shorthorns which are bred more for extreme show type: stature and angularity
- ~ Easy-fleshing
- ~ Many are polled, some homozygous (100% dehorner)
- ~ Calm, easy-going disposition
- ~ Excellent beef yield on steers
- ~ Well-attached udders that last
(The cow below was 8 years old.)



Distinguishing Traits of our Dutch Belted

We carry on with this endangered breed because of its many valuable traits perfectly suited for practical dairy production.

- ~ Incredible longevity
- ~ Excellent reproduction
- ~ Hardiness
- ~ Smaller frame than Milking Shorthorns
- ~ Mobility and agility
- ~ Assertive and energetic
- ~ Silky udders with little edema
- ~ Special milk quality with high cheese yield



BRINK-Wash-Luke-Abub

Born November 4, 1998

aAa 324156 (Open – Tall - Strong)

Stud Code 54DL04

DBCAA Reg# 2706

A2/A2 Beta Casein



Brink's dam exhibited exceptional components, youthfulness and longevity. His sire was from the O'Neill herd of Manteno, Illinois, from one of their most outstanding cow families for dairy character.

Because of his outcross lineage, Brink could be a good bull to use on line bred cows. He is the sire of Sammy.

Sire: O'Neill's Luke Duke Hoffman #2547

PGS: Lakenvelders Hildas Hector #2490

PGD: Lessie Louise O #9049

Dam: Oreo-B #B1504Rc1

Bred by the Blaser Herd of

Tillamook, Oregon

Classified Very Good 88

12-04 305d 16,790m 4.8% 798f 3.6% 602p



Brink's dam, age 13

Bestyet FAMOUS-P

Born September 2, 2017

aAa 351462 (Open – Smooth - Dairy)

Heterozygous Polled

Stud Code 54DL11

DBCAA Reg# 12970

A2/A2 Beta Casein



Famous (pictured at age 15 months) has impressive depth of body and great breed character. His dam is from the great Zelma family renowned for dairyness. Famous will painlessly dehorn half of his calves. His offspring show very correct conformation with great body capacity and good belts.

Sire: Bohnview Chief Titan-ET #2858

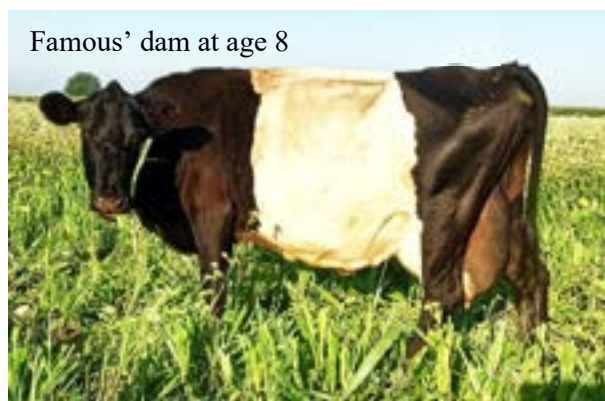
PGS: Lakeside Chief #2571

PGD: Bohnview DW Tinker ET #9692

Dam: Bestyet Valkyrie Zelma Lady-P #12097

MGS: O'Neill's He-Man #2598

MGD: Bestyet Esmerelda-P #10119



Famous' dam at age 8

Sir Upson Duke of FINDLAY

Born February 27, 2005

aAa 612 (Style – Dairy – Tall)

Classified Very Good 85

Stud Code 4800

DBCAA Reg# 2744

A1/A2 Beta Casein



Sire: Bestyet Dreamweaver #2558

PGS: Lakenvelders Hildas Hector #2490

PGD: O'Neill's Pearl Arbor #9046

5-08 401d 14,800m 3.4% 497f

+2,318 m over herdmates

95% reproductive efficiency

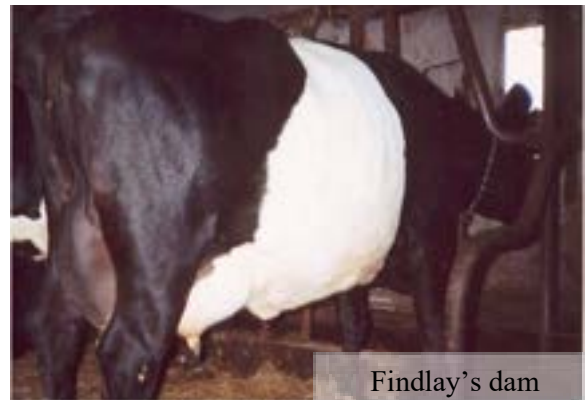
Dam: Brink-Savannah #9631

5-10 340d 12,732m 4.0% 505f 3.2% 412p

MGS: Bestyet Zinger #2615

MGD: Hannah-B #B1503Rc1 (picture on p 10)

Findlay not only comes from one of the breed's best cow families for longevity and snug udders, but he is line bred to another superior cow family, notably the Swett Farm Dennis daughter O'Neill's Pearl Arbor, Zinger's maternal granddam, one of the first cows my husband identified 40 years ago as a prime bull mother. Offspring show very good conformation.



Findlay's dam

Bestyet FORTIFIED-P

Born February 28, 2011

aAa 162 (Dairy – Style - Tall)

Heterozygous Polled

Stud Code 138DL5111

DBCAA Reg# 2842

A1/A2 Beta Casein



Sire: Galoff's Jumbo Eddie-ET #2767

PGS: Threeway Acres Jumbo #2512

PGD: Threeway Acres Stripe #9433

Dam: Bestyet Rock Fern Fancy #9765

MGS: Bestyet Roxie's Rocket #2670

MGD: Bestyet Star Fern Fancy #B0758.9375

Fortified is a balanced, clean-lined bull with durable bone. His cow family has strong frames and well-attached, balanced mammary systems.

His offspring are correct with great udders and good markings, and half are polled.

Fortified daughter at age 7



Bestyet HELPFUL

Born March 25, 2009

aAa 126 (Dairy - Tall - Style)

Stud Code 138DL4597

DBCAA Reg# 2813

Helpful's dam



Helpful's calves are born easily and are good starters, with ideal belted markings. His freshened daughters are medium small and sturdy with snug udders, the kind that improve with age.

Helpful's maternal sister



Sire: O'Neill's He-Man #2598

PGS: Bestyet James #2569

PGD: Roxie Roxanne #9291

Dam: Bestyet Hans 817 #9716

MGS: Brink-Hans #2716

MGD: Bestyet Gold 817 #B1842Rc2

Bestyet PERFECT DAY-ET

Born August 12, 1994

aAa 231 (Tall - Open - Dairy)

Stud Code 138DL1084

DBCAA Reg# 2636

AI/A2 Beta Casein



Perfect Day is a calving ease sire that sires excellent components. Daughters are moderate-sized with capacious udders.

Daughter records:

2-0 14,240m 4.4% 625f 3.5% 497p

2-02 14,380m 4.0% 577f 3.4% 482p

2-01 15,600m 4.6% 717f 3.4% 538p

Sire: Lakenvelder's Supreme Sunday #2509

PGS: Davie B of Tillamook #2400

PGD: Vickerman Hill Supreme #8495

10-yr-old record 13,506m 3.7% 503f

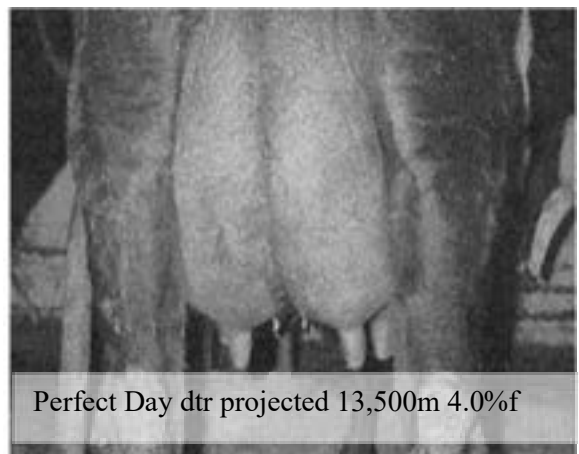
Dam: Dutchess Zelma "O" #9323

Lifetime ave 20,600m 3.2% 665f 3.4% 702p

MGS: Bestyet James #2569

MGD: O'Neill's Pearl Arbor #9046

5-03 401d 14,800m 3.4% 497f



Perfect Day dtr projected 13,500m 4.0%f

Sir Upson's RED LEGACY

Born December 17, 2011

aAa 261 (Tall - Style - Dairy)

Stud Code 138DL5184

DBCAA Reg# 2853

A1/A2 Beta Casein



Red Legacy represents the best red genetics in the breed, in addition to being a very correct bull with an impressive balance of substance and refinement. Offspring are generally well-marked with very well-attached mammary systems.



Red Legacy daughter, age 5

Sire: Sir Upson Shrek #2836

PGS: Sir Upson Laddie #2740

PGD: Lady Upson AC Schuyler #9571

Dam: Lady Upson's Dream of Richfield #9577

MGS: Bestyet Dreamweaver #2558

MGD: Oreo PD Mohawk #9553

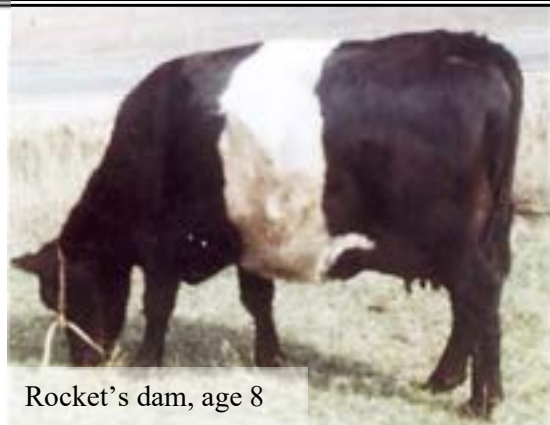
Bestyet Roxie's ROCKET

Born June 23, 1998

aAa 543 (Smooth - Strong - Open)

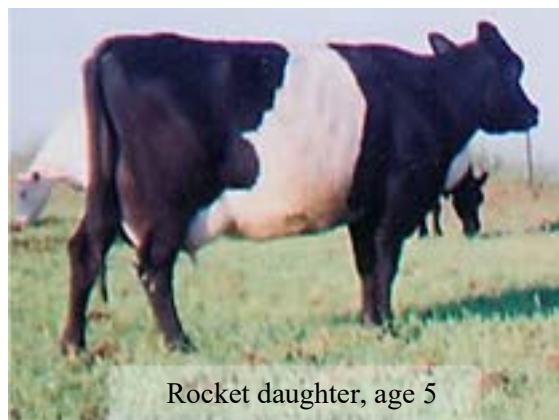
Stud Code 54DL03

DBCAA Reg# 2670



Rocket's dam, age 8

Rocket's cow family and daughters are powerful dairy cows with volume, capacity, great vigor, and quality udders. He adds more substance, strength, and smoothness than the typical Dutch Belted sire.



Rocket daughter, age 5

Sire: Grayview Gold Dust #2643

PGS: Grayview Ben's Best Goldie #2532

PGD: Grayview Number 639 #9479

5 records over 18,000m 710f

Dam: Bestyet O'Roxie #9439

MGS: Bestyet Big "O" #2603

MGD: Roxie's Rosie "O" #2593

Brink-SAMMY-RC

Born April 30, 2002

aAa 135 (Dairy – Open – Smooth))

Stud Code 54DL08

DBCAA Reg# 2711

A1/A2 Beta Casein

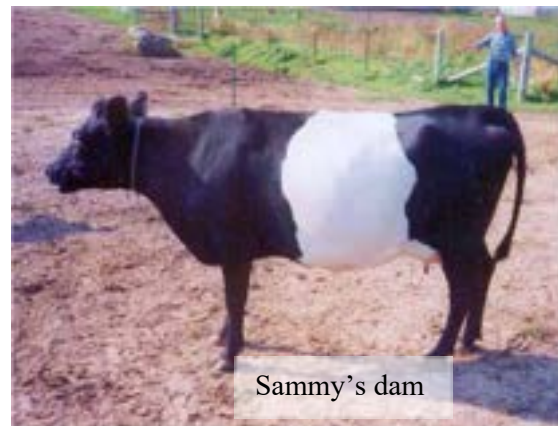


Sire: BRINK-Wash-Luke-Abub #2706
(see page 4)

Dam: Brink-Savannah #B1511Rc2
3-07 429d 13,649m 5.2% 710F 3.2% 438p
5-00 253d 10,010m 3.8% 378f 2.9% 289p
5-10 340d 12,732m 4.0% 505f 3.2% 412p
6-09 94d 5,506m 4.0% 224f 3.0% 164p INC
MGS: Bestyet Zinger #2615 (see page 11)
MGD: Hannah-B #B1503Rc1 (pic on p 10)
11-04 265d 12,697m 4.2% 532f 2.8% 361p
Classified Excellent in all categories at age 16

Sammy is a sire that offers refinement and dairy character. His dam was from one of the top cow families of the breed for longevity.

Since Sammy is a red carrier, he has a 50% chance of siring red offspring when bred to red cows, and a 25% chance of siring red offspring when bred to red carrier cows.



Sammy's dam

Bestyet STARDUST

Born May 11, 2000

aAa 324 (Open – Tall - Strong)

Stud Code 138DL2644

DBCAA Reg# 2691

A2/A2 Beta Casein



Stardust daughter

Sire: Grayview Gold Dust #2643
PGS: Grayview Ben's Best Goldie #2532
PGD: Grayview Number 639 #9479
5 records over 18,000m 710f
Dam: Bestyet Starberry #9462
MGS: Dutch Hills Starbuck #2534
MGD: Bestyet Mayberry #9389

Stardust offspring show tremendous breed character, strong and capacious build and vigor. Daughters have easy milkout and ample teats.



Stardust daughter

Best of TILLAMOOK

Born December 12, 1993

aAa 315 (Open – Dairy - Smooth)

Stud Code 138DL1082

DBCAA Reg# 2657

A1/A2 Beta Casein



Sire: Dennis Shirley #2407

PGS: Lakeside Dennis #2352

PGD: Vickerman Hill Supreme #8495

10-yr-old record 13,500m 3.7% 503f

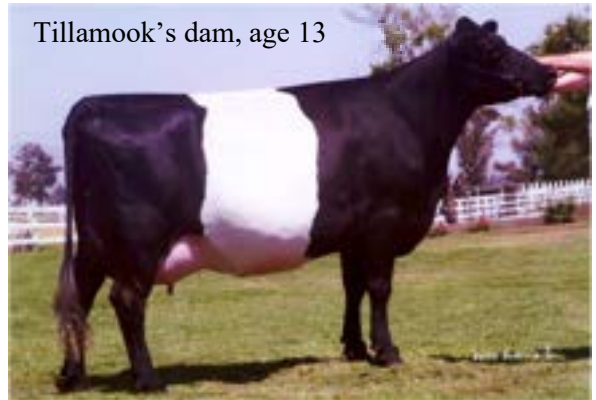
Dam: Hannah B #B1503Rc1

11-04 265d 12,697m 4.2% 532f 2.8% 361p

Classified Excellent in all categories at age 16.

Tillamook was the first son of the great Hannah-B, who lived to over 18 years of age. He has proven himself the sire of cows like his dam with longevity, snug udders, medium size, and great breed character and personality.

Tillamook's dam, age 13



Bestyet TRAILBLAZER Red

Born January 19, 2018

aAa 126435 (Dairy - Tall – Style)

Red

Stud Code 54DL12

DBCAA Reg# 13283

A2/A2 Beta Casein



Sire: Bohnview Chief Titan-ET #2858

PGS: Lakeside Chief #2571

PGD: Bohnview DW Tinker ET #9692

Dam: Bestyet Lorelei Lady #12395

MGS: Sir Upson's Red Legacy #2853

MGD: Bestyet Hilda Lady #10022

Trailblazer is deep red, very correct, and has a great disposition. His calves are full of breed character. His mother is a powerful cow with a beautifully silky udder and great will to milk. Her reproductive efficiency is fantastic—she had her 4th calf before reaching 5 years of age. She traces back to Dutchess Zelma “O”, Zinger's dam.



In the milking parlor



Trailblazer's dam

Bestyet ZINGER-RC

Born April 14, 1992

aAa 312 (Open - Dairy - Tall)

Red Carrier

Stud Code 138DL819

DBCAA Reg# 2615

A1/A2 Beta Casein



Sire: Dutch Hills Starbuck #2534

PGS: Dennis Shirley #2407

PGD: 934 tattoo 84

9-02 305d 22,040m 3.5% 785f

Dam: Dutchess Zelma "O" #9323

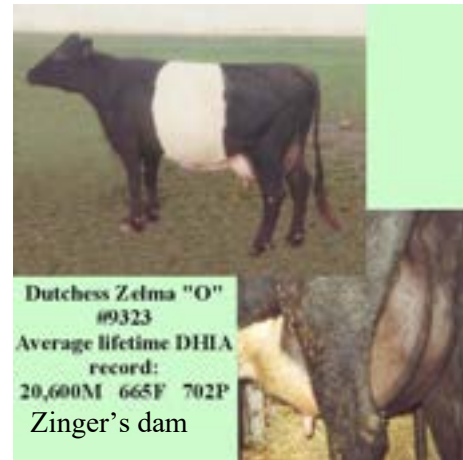
2-09 485d 21,400m 3.1% 662f 3.5% 746p

4-01 385d 19,800m 3.4% 669f 3.3% 658p

MGS: Bestyet James #2569

MGD: O'Neill's Pearl Arbor #9046

Zinger has proven to sire well-marked offspring with true, consistent breed character: dairy, open, moderate size, with good milk components. He is an excellent choice for crossing with Holsteins or other breed cows to get Dutch Belted traits. He is line bred, which accounts for his very uniform breeding pattern.



Bestyet ZORRO

Born March 10, 2000

aAa 561 (Smooth - Style - Dairy)

Stud Code 138DL2643

DBCAA Reg# 2690

A1/A1 Beta Casein



Sire: Bestyet Apple Cider #2613

PGS: Bestyet Big "O" #2603

PGD: Princess Rosa "O" #9322

Dam: Bestyet Zinger Rosa #9490

MGS: Bestyet Zinger #2615

MGD: O'Neill's Rosa Hoffman #9190

This cow had no James blood.

Zorro's sire is one of our favorites for silky udders. Zorro's granddam was one of our very first from the O'Neill herd, also with great udder traits. His aAa numbers are a unique combination that can be especially useful.



More pictures of the genetics these sires represent:

Zorro daughter



Paternal sister to Famous and Trailblazer



Rocket daughter



Maternal sister to Trailblazer



Paternal sister to Helpful's dam



Paternal sister to Rocket and Stardust



Paternal sister to Famous and Trailblazer



Famous daughter



Rojahns BASS PLAYER-ET

Born October 20, 2004

aAa 162354 (Dairy - Style - Tall)

Stud Code 139MS3461

AMSS Reg# 462441

A2/A2 Beta Casein



Bass Player is a tall, sharp dairy bull with good production and excellent udders in his pedigree. His offspring will tend to be a bit larger and leggier than some of our other bulls.

Sire: Pinehurst Rebel 9th 423595

PGS: Prairie-Pine Pete 6th 418449

PGD: Pinehurst Ruby Rucinda 7th-ET 419041

Dam: Kingsdale Elizabeth 12th 431531

3-04 16,370m 3.9% 631f 3.3% 543p

5-07 17,700m 3.7% 648f 3.5% 621p

6-08 16,390m 3.4% 555f 3.2% 523p

MGS: Kingsdale Supreme 423335

MGD: Kingsdale Elizabeth 6th 426447



Bass Player daughters



Cantagree Duca DAOSTA N P

Born April 30, 2019

aAa 351624 (Open - Smooth - Dairy)

Heterozygous polled

Stud Code 99MS11370

AMSS Reg # 68326549

A2/A2 Beta Casein



From the leading Native Milking Shorthorn dairy herd, we are pleased to offer this son of Finocchio N P from the highly respected Duches cow family.

Daosta's linebred sire, Finocchio P, has sired very promising daughters and his semen sold out in a short time.

Sire: Cantagree Finocchio N P 68323185

PGS: Rojahns Iris NKT Lancer N ET P 68307340

PGD: Cantagree Fennel N 467074

Lifetime: 115,130 pounds milk 4.2%f 3.5%p

Better than 12-month calving interval for 10 years

Dam: Cantagree Duches Cache 24 N P 68305752

6-11 287d 14,380m 3.5% 503f 2.9% 417p

12-month average calving interval over 7 lactations

MGS: Cantagree Victor Ivanovich N P 462366

MGD: Cantagree 9th Duches O Cache N 462007



Daosta's paternal sister

Cantagree Fanfare N P

Born March 10, 2012

aAa 153624 (Dairy – Smooth - Open)

Heterozygous polled

Stud Code 99MS8047

AMSS Reg # 68312574

A1/A2 Beta Casein



Sire: Cantagree Flavius 2nd-N-P

PGS: Meadowbrook Chieftain 9th-N-P 329245

PGD: Mattson's Fla-N 429201

Dam: Cantagree Filpail-N 464088

5-11 311d 13,220m 3.9% 515f 3.4% 449p

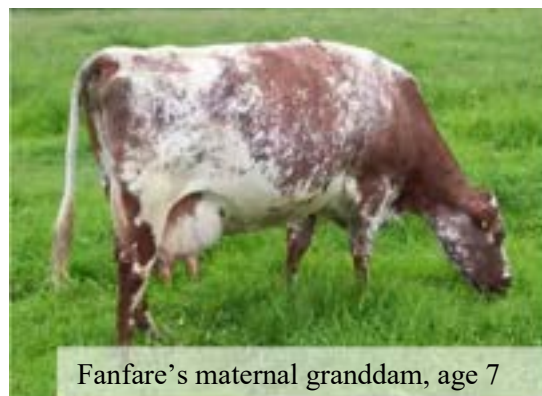
MGS: Cantagree King's Design-N 454014

MGD: Cantagree Filida-N 452636

4-11 323d 13,610m 4.1% 558f 3.4% 462p

Fanfare is a linebred native sire from the Cantagree dairy herd's "F" family which has great transmitting ability. His daughters are dairy and milk well.

We are using Fanfare as a calving ease sire and to improve components. Semen supply is very limited.



Fanfare's maternal granddam, age 7

Cantagree Felipe N P

Born March 10, 2020

Heterozygous polled

Stud Code 99MS12782

AMSS Reg # 68329216

A2/A2 Beta Casein



Sire: Cantagree Grand Duke N 68320528

PGS: Gold Mine Grandeur N 324794

PGD: Cantagree Duches O Cache 12-N 464091

Lifetime 99,250m 3651f 3070p

Dam: Cantagree Fenny N P 68317472

5-11 324 days 11516 milk 4.1 f 3.5 p

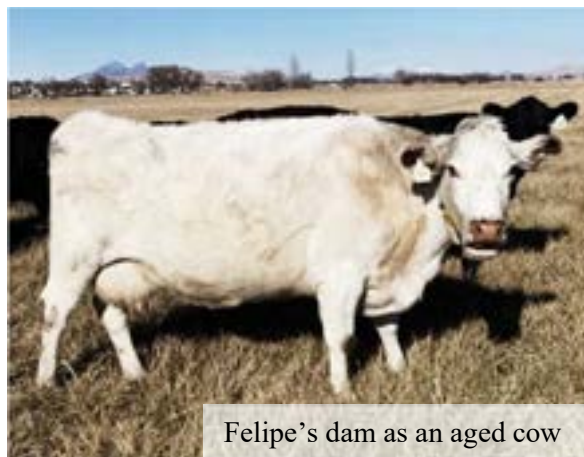
MGS: Cantagree Victor Ivanovich N P 462366

MGD: Cantagree Fennel N 467074

Lifetime: 115,130 pounds milk 4.2%f 3.5%p
Better than 12-month calving interval for 10 yrs

We are excited to offer this linebred sire from the mountains of Utah. He should add "a bit of color" to his offspring.

We have deep respect for the Cantagree native dairy genetics. These records are made on pasture or hay and 4-8 lbs per day of ground barley. Excellent calving intervals over long lifetimes are typical of these cows.



Felipe's dam as an aged cow

Meriville FLASHBACK

Born May 15, 2000

aAa 651 (Style – Smooth - Dairy)

Stud Code 138MS3420

AMSS Reg #461962

A1/A2 Beta Casein



Flashback's paternal sister

Sire: Henzler's Revival of Glenside 441716

PGS: Erora Majesty 228867

PGD: Henzler's Clay Lady 441711

Dam: Meriville More Sally 461956

MGS: Meriville Peerless 420146

MGD: Meriville Satin Sally 402600

305d 18,000m 3.8% 672f 3.5% 548p

Flashback was solid red. His sire represents some of the milkiest native genetics available. His dam was sired by our famous Peerless, solidly plus proven for milk for years in U.S. and abroad. His maternal granddam was sired by the great Meriville Sumthun Else and her dam was a close descendant of Rosemont Red Sally 12th, top butterfat producer in Illinois.



Flashback daughter

Lapp's JOE

Born July 4, 2004

aAa 345 (Open – Strong – Smooth)

Stud Code 138MS3460

AMSS Reg # 461269

A1/A2 Beta Casein

Joe's paternal sister, age 5



Sire: Meriville Rock County 451276

PGS: Cherry Key Signet 341403

PGD: Meriville Pansy Cissy 420853

Dam: Hauxwell Bessie Jo 24th 461263

MGS: Mericrest Outlaw 437226

MGD: Hauxwell Bessie Jo 17th 040F66691

Joe was a handsome light roan bull, selected from one of the best cows of Tom Ripley's Canadian herd. He is line bred to Peerless, with a careful outcross of Cherry Key Signet, a milky native sire born in 1968. Joe's daughters are milky with great udders. They are later-maturing and would respond well to grain feeding.

Joe's paternal sister



Meriville KING OSCAR-P

Born May 23, 2005

aAa 216435 (Tall – Dairy - Style)

Heterozygous polled

Stud Code 138MS3635

AMSS Reg # 462685

A1/A2 Beta Casein



King Oscar daughters tend to be taller and sharper than our others, with great depth of rib and milky udders that are level and well-attached.

King Oscar daughter



Sire: Mericrest Picasso 438934

PGS: Ridgewood Tracy 329732

PGD: Mericrest Kewpie 427426

Dam: Meriville Queen Glisten-P 452256

MGS: Meriville King Arthur 419478

Dam: 4-01 15,390m 3.8% 578f 3.5% 539p

MGD: Meriville More Glisten-P 451852

Cantagree LORD BATES 3d

Born March 30, 2007

aAa 426 (Strong - Tall – Style)

Stud Code 99MS6501

AMSS Reg # 467221

A1/A1 Beta Casein



Lord Bates is uniquely line bred in at least three ways to individuals generally different from our herd, using some of the better bloodlines for moderate-sized, long-lived cows with good milk production and test. The Cantagree herd has outstanding calving intervals and longevity, with primarily grass management and minimal grain.

Sire: Meriville New Millenium 450912

PGS: Idalee Hillholm Design 397129

PGD: Meriville Satin Roansy Cissy 406482
305-2X-ME 16,820m 3.8% 639f 3.7% 622p

Dam: Cantagree Linda Bates 16th 445764

Better than 12-month calving lifetime

108,110m 3.7% 3976f 3.0% 3273p

MGS: Idalee Grand Benefactor 424434

MGD: Cantagree Linda Bates 7th 436116

Better than 12-month calving interval

5-09 317d 17620m 3.1% 552f 3.0% 532p



Meriville MATCHMAKER-P

Born June 5, 2008

aAa 6125 (Style – Dairy – Tall)

Heterozygous polled

Stud Code 138MS4436

AMSS Reg # 68301663

A1/A1 Beta Casein



Sire: Meadowbrook Chieftain 9th-N-P 329245

PGS: P-Meadowbrook Premier 3d 307974

PGD: P-Meadowbrook Lassie 3d 182291

Dam: Meriville Pick A Match Ruby 461970

MGS: Mericrest Picasso 438934

MGD: Meriville Matchless Ruby 461958

Matchmaker's sire is a sought-after native bull born in 1966 who also sired our popular Milk More-P bull.

Matchmaker's calves are uniformly small birthweight and vigorous. They mature with classic dual-purpose type and very nice udders.

Matchmaker's dam



Meriville NEW MILLENIUM

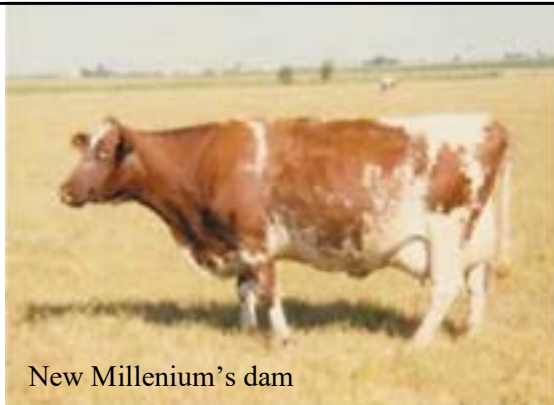
Born September 30, 1996

Red with little white

Stud Code 120MS571

AMSS Reg # 450912

A1/A1 Beta Casein



New Millenium's dam

Sire: Idalee Hillholm Design 397129

Extreme components

PGS: Lagos Cache Winner 345710

PGD: Hillholm Fancy Dahlia 353917

Dam: Meriville Satin Roansy Cissy 406482 E90

305-2X-ME 16,820m 3.8% 639f 3.7% 622p

MGS: Meriville Sumthun Else 385850

MGD: Meriville Plum Cissy 2d 398449

New Millenium's sire was a native born in 1982, proven to sire high components with moderate production and functional type. He is best used on very dairy cows with good udder width and attachments. He represents an opportunity to use some different native blood from a dairy background.



New Millenium daughters



Meriville OUTER STAR-PP

Born September 1, 2010

aAa 516 (Smooth – Dairy - Style)

Homozygous polled

Stud Code 138MS4928

AMSS Reg # 68307518

Red with little white

Newborn Outer Star with dam



Outer Star-PP will painlessly dehorn all of his calves. He is a sturdy, well-fronted bull with good spring of rib, good foot and leg structure, clean tail setting and clean pins. He is growthy and matured early. Offspring show sturdy, dual purpose type.

Sire: Meriville Outstanding-P 461989

PGS: Mericrest Outlaw 437226

PGD: Meriville Maylu Ruby-P 450382

Dam: Meriville Shooting Star-P 68307517

MGS: Rojahns Bass Player 462441

MGD: Meriville Royal Star-P 68307516

Her sire: Meriville Prince Edward



Outer Star's paternal sister

Mericrest OUTLAW

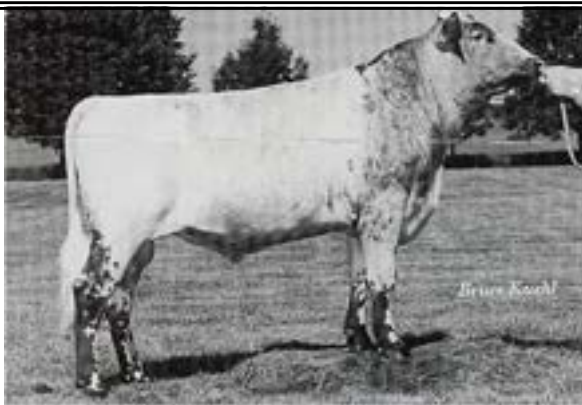
Born September 9, 1995

aAa 354126 (Open - Smooth – Strong)

Stud Code 138MS1254

AMSS Reg # 437226

A1/A1 Beta Casein



Outlaw is our most intensely linebred bull, with many years in the top of the USDA milk proofs. His 816 daughters average 18,866m with 3.4% 646f 3.0% 571p. Udder cleft and width is excellent and they are moderate in stature. He is an ideal bull to use on rounder cows that need more milk. His full sister, Mericrest Kewpie, is pictured on page 20 as she is Picasso's dam.

Sire: Meriville Peerless 420146

PGS: Meriville Plumchuck 409424

PGD: Meriville Satin Roansy Cissy 406482

305-2X-ME 16,820m 3.8% 639f 3.7% 622p

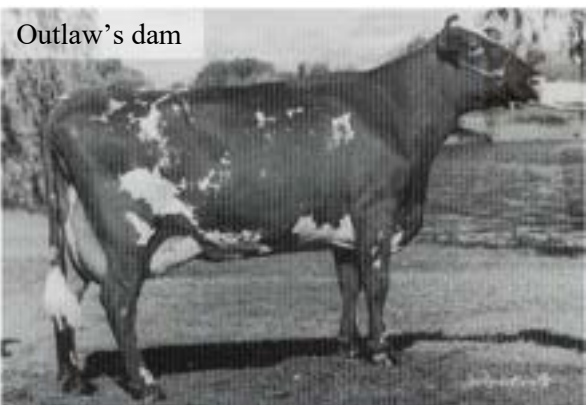
Dam: Meriville Spring Cutie Gulman 411309

Classified Excellent

6-5 365d 21,820m 3.6% 786f 3.4% 752p

MGS: Meriville Skookumchuck 398452

MGD: Meriville A.S. Carol Gulman 411291



Outlaw's dam

Meriville OUTSTANDING-P

Born April 19, 2005

aAa 354216 (Open - Smooth - Strong)

Heterozygous polled

Stud Code 138MS3636

AMSS Reg # 461989

A1/A1 Beta Casein



Sire: Mericrest Outlaw 437226

PGS: Meriville Peerless 420146

PGD: Meriville Spring Cutie Gulman 411309

6-5 365d 21,820m 3.6% 786f 3.4% 752p

Dam: Meriville Maylu Ruby-P 450382

MGS: Cantagree Matchless Duke-N 443481

MGD: Meriville Morlu Ruby-P 436448

Her sire: Meriville Peerless

Outstanding-P has been a consistent calving ease sire for us. He is from a prolific cow family, and his sire was reliably plus proven. Outstanding daughters are generally compact, correct cows with neat, snug udders.

Outstanding's paternal sister



Meriville PEERLESS

Born August 3, 1988

The plus proven, linebred bull that made our Meriville herd famous worldwide.

Stud Code 138MS429

AMSS Reg # 420146

BB Kappa Casein



Peerless' double granddam

Sire: Meriville Plumchuck 409424 Classified Ex

Dtr ave 16,327m 3.7% 600f 3.4% 555p

PGS: Meriville Skookumchuck 398452

PGD: Meriville Plum Cissy 2d 398449

Dam: Meriville Satin Roansy Cissy 406482

305-2X-ME 16,820m 3.8% 639f 3.7% 622p

MGS: Meriville Sumthun Else 385850

MGD: Meriville Plum Cissy 2d 398449

Peerless is a proven milk bull. His linebreeding makes him particularly consistent, and he has sired fabulous daughters the world over. His offspring are roan or white.

We have decided to offer some of our small remaining inventory of this great bull for a limited time.



Peerless daughter in the U.K.

Mericrest PICASSO

Born March 9, 1996

aAa 456 (Strong - Smooth - Style)

Stud Code 138MS2649

AMSS Reg # 438934

A1/A2 Beta Casein



Sire: Ridgewood Tracy 329732

Born August 29, 1966

Excellent 91.1

10 X Grand Champion

PGS: Spring Brook Robin Hood 260794

PGD: Ridgewood Obee 290059

5-9 363d 13,590m 4.3% 580f

Her dam: 9-01 18,360m 4.0% 740f

Dam: Mericrest Kewpie 427426 Excellent 93

5-10 304d 21,265m 3.7% 793f 3.5% 744p

6-9 340d 28,421m 2.9% 822f 3.5% 992p

World Dairy Expo Champion 5 years

MGS: Meriville Peerless 420146

In top 10 of North American proofs 6+ years

MGD: Meriville Spring Cutie Gulman 411309

6-5 365d 21,820m 3.6% 786f 3.4% 752p

Picasso is a bull with great strength and balance. He has sired many fine daughters around the country over the last 25 years. His tested daughters averaged 16,050m 3.6% 580f 3.1% 501p.

His sire was an excellent native bull from lines with great milk components and solid type. His dam was the great linebred Kewpie, which accounts for his relatively reliable breeding pattern. (Kewpie's dam was sired by the same bull, Meriville Skookumchuck, as Peerless' sire.)



Meriville ROCK COUNTY

Born September 6, 2000

aAa 516 (Smooth – Style – Dairy)

Stud Code 54MS53

AMSS Reg # 451276

A1/A1 Beta Casein



Rock County's sire was born in 1968, hand-picked by Kenneth Hoffman to mate with our best linebred Meriville cow to utilize top native milk genetics.

His daughters are fine dairy cows, as exemplified by the cow below in the Cantagree herd. (Thanks to Darren Wold for the photo.)



Sire: Cherry Key Signet 341403

PGS: Pinesedge Cherry Key 306246

PGD: Princess Martha Clay 314701 VG88

2 yr 13,394m 3.5% 474f

Dam: Meriville Pansy Cissy 420853

Better than 12 month calving interval for 7 lactations

MGS: Meriville Plumchuck 409424

MGD: Meriville Satin Roansy Cissy 406482 EVVE

305-2X-ME 16,820m 3.8% 639f 3.7% 622p

Meriville Prince WILDFLOWER-PP

Born December 15, 2011

aAa 435612 (Strong – Open - Smooth)

Homozygous polled

Stud Code 138MS5908

AMSS Reg # 68317914

A1/A2 Beta Casein



Wildflower carries an interesting combination of dual purpose (from his sire) and dairy genetics (from his linebred Meriville dam). His daughters are very well-built and have calm dispositions.

All of his offspring will be naturally polled.

Sire: Rojahns Iris NKT Lancer N ET P

PGS: Nodak King's Tradition-N 348533

Born in 1970

PGD: Homeplace HS Blaze Iris-P 450896

Linebred Meadowbrook Chieftain 9th

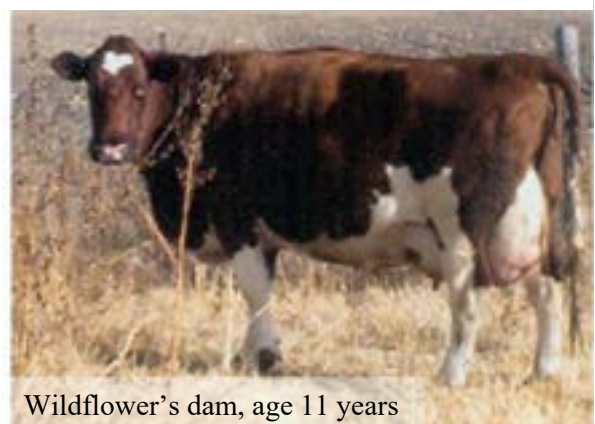
Dam: Meriville Queen Glisten-P 452256

MGS: Meriville King Arthur 419478

His dam: VG87 4-01 15,390m 3.8% 578f 3.5% 539p

MGD: Meriville More Glisten-P 451852

Meriville Peerless daughter



Wildflower's dam, age 11 years

American Milking Devon Association Sires

There has been interest in these sires we collected some 30 years ago to conserve genetics from some of the best-milking lines of this old dual-purpose breed. For milk production and performance, we still prefer our Milking Shorthorn and Dutch Belted, but we offer these because of their unique pedigrees.

Red Ox Farm MOSES 138DE944
 Born August 6, 1992 Reg # 10176
 A1/A1 Beta Casein
Sire: Tom of Devon Hill #10041
PGS: Red Boy #81
PGD: Hawaii of Devon Hill #370
Dam: Wheelock Farm Milky #242
MGS: Saxton Farm Almanzo #10018
MGD: Wheelock Farm Miline

Red Ox Farm SAMSON 138DE943
 Born June 9, 1992 Reg # 10175
 A1/A2 Beta Casein
Sire: Wheelock Farm J. Phil Payle #10107
PGS: Tom of Devon Hill #10041
PGD: Tunbridge Sarah #15
Dam: Wheelock Farm Marlo #182
MGS: Wheelock Farm Jubal #10047
MGD: Wheelock Farm Martha #85

And here are some more daughters of our Milking Shorthorn bulls...



Wildflower daughters



Outstanding daughter



Flashback daughter, age 10 years



Peerless daughters

How to Order Semen

Please send a check or money order along with your order to the address below. You may call or e-mail to confirm the amount. Remember to apply discounts (page 2) and free or reduced shipping.

Note: If you prefer to pay by credit or debit card, email us and we'll email you an invoice to pay through Paypal with your credit or debit card. There is a 4% fee for this service.

Name _____

Farm Name _____

Shipping Address (Must be a road address, not Route or PO Box)

Phone Number _____

E-mail Address _____

Date _____

# straws	Bull name	Stud Code	Price
<i>Must be in increments of 5 straws per bull</i>			<i>(Including volume discount)</i>
<i>Add \$15 for each split cane, that is, each cane of only 5 straws, to cover the extra handling</i>			

Subtotal _____

Shipping -Free if total is \$550 or more, \$50 if \$350-549

Call or e-mail for shipping quote on smaller orders _____

TOTAL _____

To contact us:

Bestyet A.I. Sires Winifred Hoffman 4279 E 12th Rd Earlville, IL 60518 bestyetaisires@gmail.com
(815)246-9523 or (815)826-0241 (cell number, can text)